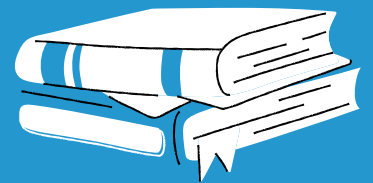


# German Courses

---



[WWW,WTG-ACADEMY.COM](http://WWW.WTG-ACADEMY.COM)

# A1

## German Course



Prepared by :

**WTG Academy**

[www.wtg-academy.com](http://www.wtg-academy.com)



The A1 German Course is taught all year around, with different starting dates to fit all student's availabilities.

An examination is done every half course helps students to check their progress.



# INTRODUCTION

# A1 COURSE CONTENT

## Content

Information about yourself  
or others

Activities and hobbies

Geography

Shops/shopping and public  
facilities

Daily routines

Transportation and  
connections

Food and drink

## Grammar

Present verb conjugation

Personal pronoun

Possessive article

Definite and indefinite article

Verbs with vowel change

Propositional sentence,  
interrogative sentence,  
imperative sentence

Separable verbs / Modal verbs

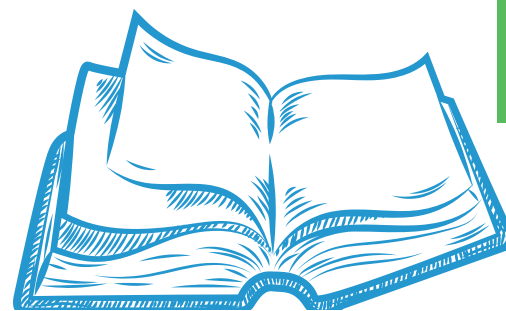
Accusative / Prepositions

Perfect tense



# AFTER TAKING THE A1 COURSE

- Students will be able to develop a basic knowledge of the German language.
- Understand and use familiar expressions and standard phrases.
- Introduce themselves, express and understand personal details.
- Communicate basic information in a simple and clear way.
- Students finish courses with a WTG certificate (teilnahmebestätigung), documenting course level and course duration.



## PRICE LIST

- *A1 German Course:*  
*450 Euros*
- *A1.2: 250 Euros*



Course	Period	Place	Duration	Availability
A1.1	3-4 Weeks	Online   Mainz   Rüsselsheim   Lebanon	3 - 4 days per week 3 hours a day	Morning and Afternoon
A1.2	3-4 Weeks	Online   Mainz   Rüsselsheim   Lebanon	3 - 4 days per week 3 hours a day	Morning and Afternoon

# A2

## German Course



Prepared by :

**WTG Academy**

[www.wtg-academy.com](http://www.wtg-academy.com)



The A2 German Course is taught all year around, with different starting dates to fit all student's availabilities.

An examination is done every half course helps students to check their progress.



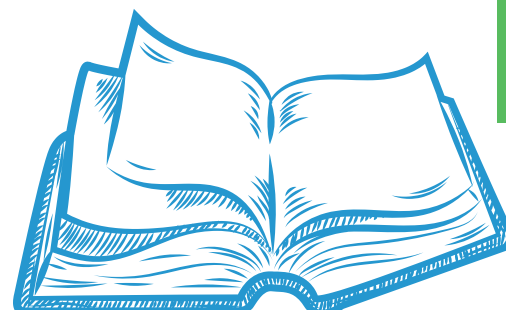
# INTRODUCTION

# A2 COURSE CONTENT

Content	Grammar
Work and leisure	Perfect: separable, inseparable verbs
German cities (location, size, sights, orientation)	Alternate prepositions
Clothing	Verbs with dative
City and country life	Comparative, superlative
Furniture and fixtures	Prepositions with dative case
Orientation in buildings	Modal verbs in the past tense
Quantities and dimensions	Separable verbs / Modal verbs
Different cultures	Subordinate clauses: that, because, if, although
	Adjective declension

# AFTER TAKING THE A2 COURSE

- Level A2 is the keystone in learning German.
- At this level, the student will learn 80 % of the German grammar, which enables them to build sentences correctly in the future.
- The student will also be able to communicate simple and routine tasks.
- Moreover, he/she will understand sentences and will recognize the frequently used expressions.
- Students finish courses with a WTG certificate (teilnahmebestätigung), documenting course level and course duration.







## PRICE LIST

- *A2: 500 Euros*
- *A2.2: 275 Euros*

Course	Period	Place	Duration	Availability
A2	3-4 Weeks	Online   Rüsselsheim	3 - 4 days per week 3 hours a day	Morning and Afternoon
A2.1	3-4 Weeks	Online   Rüsselsheim	3 - 4 days per week 3 hours a day	Morning and Afternoon
A2.2	3-4 Weeks	Online   Rüsselsheim	3 - 4 days per week 3 hours a day	Morning and Afternoon

# B1

## German Course



Prepared by :

**WTG Academy**

[www.wtg-academy.com](http://www.wtg-academy.com)



# INTRODUCTION

The B1 German Course is taught all year around, with different starting dates to fit all student's availabilities.

An examination is done every half course helps students to check their progress.



# B1 COURSE CONTENT

## CONTENT

- Houses and apartments
- Living styles
- Famous personalities
- Travel and hotels
- Weather
- Relationships
- Parties and invitations
- Eerie/Fantastic
- Diseases

## GRAMMAR

- Past tense
- past perfect
- temporal subordinate clauses: as, if, after
- final clauses
- Conjunctive II (would + infinitive)
- personal pronouns in the accusative
- locative and directional clauses
- reflexive verbs
- Reflexive pronouns in the dative and accusative case
- Relative pronouns in the dative and accusative case
- future tense I
- Passive
- Verbs with fixed prepositions



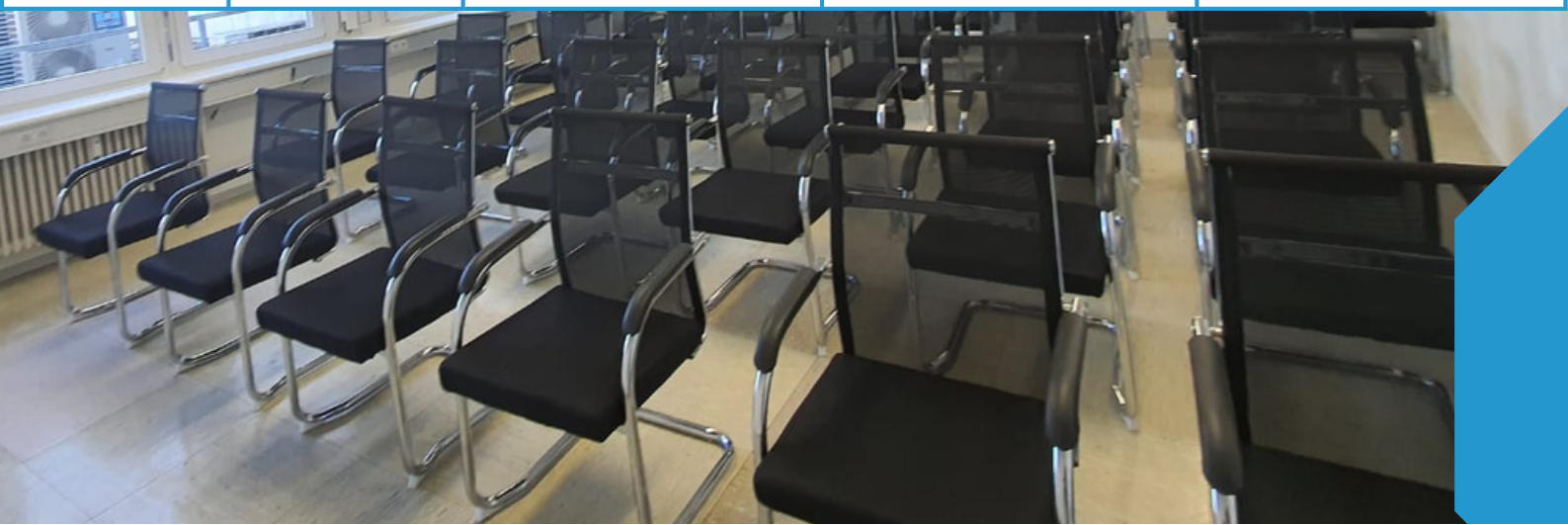
# AFTER TAKING THE B1 COURSE

- Level B1 enables the students to understand all the important content when using a standard language, talk about experiences and interests and easily communicate on familiar topics.
- The students are also able to describe dreams, hopes, and events. Moreover, he/she can give brief explanations of plans.
- Students finish courses with a WTG certificate (teilnahmebestätigung), documenting course level and course duration.

# PRICE LIST

- B1 German: 550 Euros
- B1.2 German: 300 Euros

Course	Period	Place	Duration	Availability
B1	3-4 Weeks	Online   Rüsselsheim	3 - 4 days per week 3 hours a day	Morning and Afternoon
B1.1	3-4 Weeks	Online   Rüsselsheim	3 - 4 days per week 3 hours a day	Morning and Afternoon
B1.2	3-4 Weeks	Online   Rüsselsheim	3 - 4 days per week 3 hours a day	Morning and Afternoon





# B2

## German Course



Prepared by :

**WTG Academy**

[www.wtg-academy.com](http://www.wtg-academy.com)



# INTRODUCTION

The B2 German Course is taught all year around, with different starting dates to fit all student's availabilities.

An examination is done every half course helps students to check their progress.

# B2 COURSE CONTENT

## CONTENT

- Wishes and dreams
- Home/life abroad
- Professions
- Conflicts and solutions
- Complaints
- Public spirit instead of egoism
- Media worlds
- Family
- Festivals
- School
- Film, music, sports

## GRAMMAR

- Subjunctive
- Subordinate clauses
- Main clauses
- Pronominal  
adverbs/interrogative pronouns
- Adjectives in the genitive case
- N-declension
- To + infinitive
- Conditional passive
- Past tense passive, perfect, past  
perfect, future perfect and  
future Present participle, past  
perfect participle.





# AFTER TAKING THE B2 COURSE

- You can express yourself clearly and in detail as well as argue and negotiate successfully.
- At the B2 level, you will have the vocabulary for university majors and for all general subjects. The rules are well mastered.
- Students are able to issue clear and detailed texts on a wide range of topics, explain a point of view on an objective issue and give the advantages and disadvantages of the various options.
- Students finish courses with a WTG certificate (teilnahmebestätigung), documenting course level and course duration.

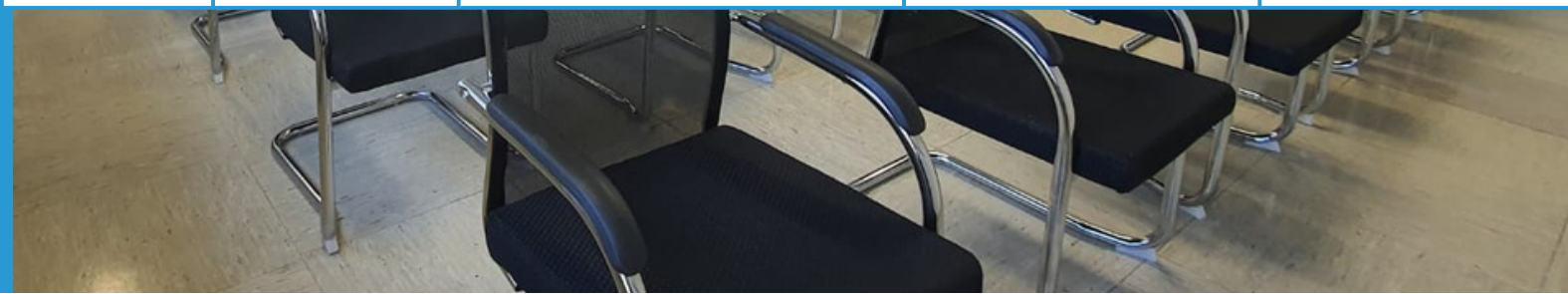


# PRICE LIST

- B2: 750 Euro
- B2.2 & B2.3  
275 Euros each



	Period	Place	Duration	Availability
B2.1	3-4 Weeks	Online   Mainz   Rüsselsheim   Lebanon	3 - 4 days per week 3 hours a day	Morning and Afternoon
B2.2	3-4 Weeks	Online   Mainz   Rüsselsheim   Lebanon	3 - 4 days per week 3 hours a day	Morning and Afternoon
B3.2	3-4 Weeks	Online   Mainz   Rüsselsheim   Lebanon	3 - 4 days per week 3 hours a day	Morning and Afternoon



- Introduction phase
- Development phase
- Practice phase
- Application phase

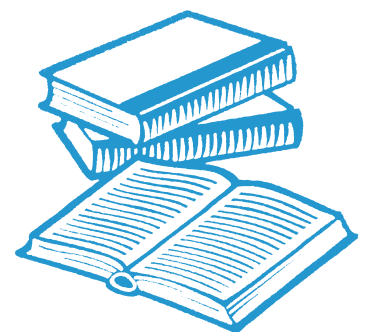
(speaking, reading, guided and free writing)



# TEACHING PHASES

# MATERIALS

- **Text books:** Begegnungen– we constantly monitor new publications and may employ additional text books that seem appropriate.
- **Hand-outs** like newspaper articles, literature etc. - Multimedia-teaching with online materials...







Number of Participants	Number of T.U.
Over 15 participants	Approximately 200 t.u.
Between 12 and 15 participants	Approximately 160 t.u.
Between 8 and 12 participants	Approximately 140 t.u.
Between 5 and 8 participants	Approximately 120 t.u.
Till 5 participants	Approximately 80 to 100 t.u.

**TEACHING UNITS**





Old Saida Road, Facing Choueifat Mall  
Choueifat - Lebanon



Alexander diehl straÙe 2A, 55130  
Mainz,  
Rheinland-Pfalz - Deutschland



MartstraÙe 6, 65428 Rüsselsheim am  
main,  
Hessen - Deutschland



WTG Consulting



WTG Aademy



WTG Aademy



WTG Academy



004917624188968



0049 61429206001



Scan to visit our website



Scan Here to register